

THE OFFICIAL



PAUL BUNYAN
SHOW

THE PAUL BUNYAN SHOW

The Original
American
Forestry
Show



OCTOBER 6-8, 2017

GUERNSEY CO. FAIRGROUNDS | CAMBRIDGE, OHIO



888-38-TREES
OHIOFOREST.ORG

INSPIRED BY TRADITION. POWERED BY INNOVATION.
THE OHIO FORESTRY ASSOCIATION

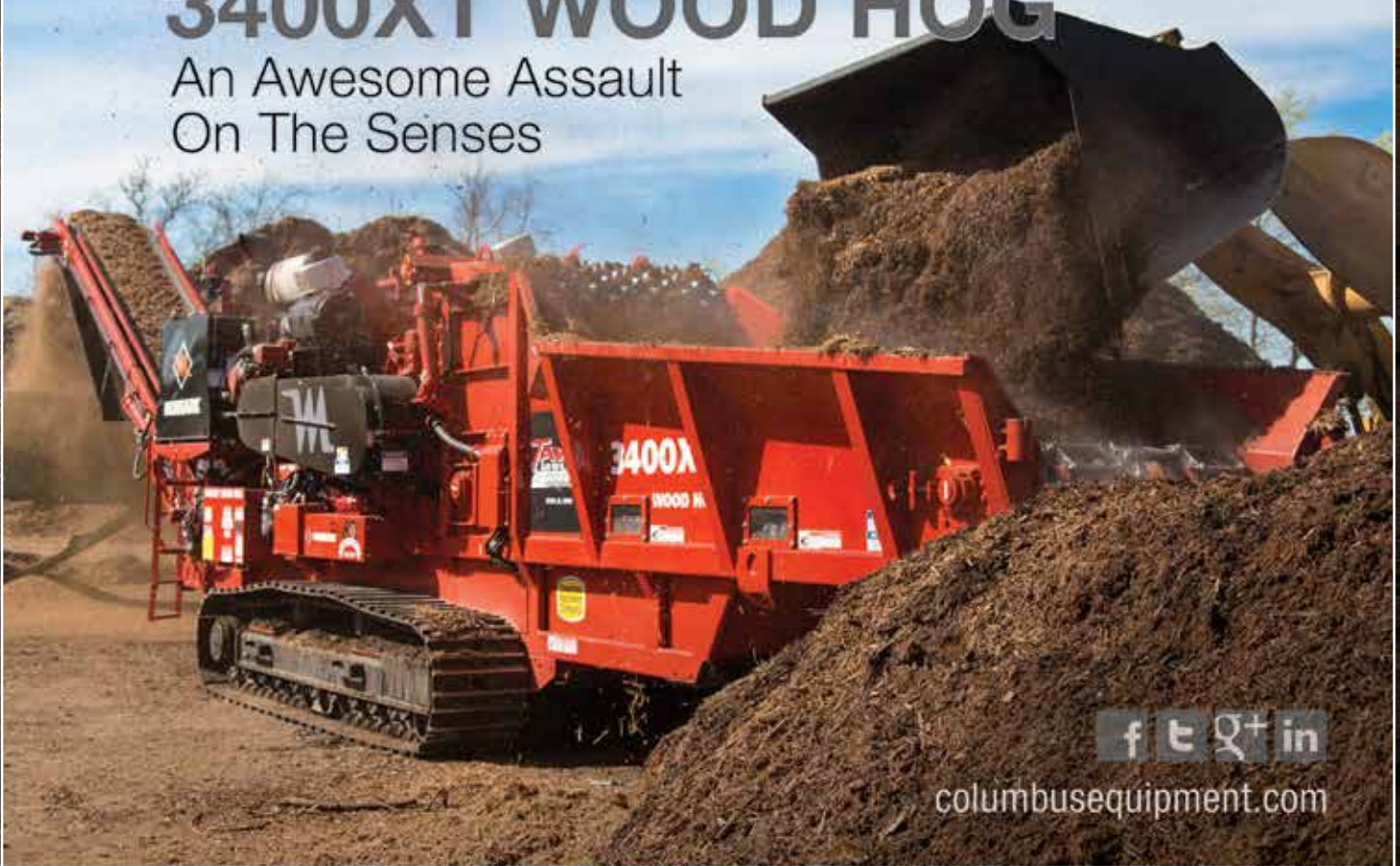




ENVIRONMENTAL DIVISION

MEET THE MORBARK 3400XT WOOD HOG

An Awesome Assault On The Senses



columbusequipment.com



Columbus Equipment Company and its Environmental Division—featuring best-in-class manufacturers Morbark, McCloskey International, Eagle Crusher, CMI, Komatsu, Barko and U.S. Pride Products—serve a full range of customers' forestry and tree-care needs across Ohio, West Virginia, Kentucky and Indiana. When equipped with industry-leading products, state-of-the-art technology, and our application and support expertise ... your success is guaranteed. Visit the possibilities at booths 400, 401, 406, 407, and demonstration areas CH3 and GR1.



Ohio's Dependable Dealer

Where Profitability And Sustainability Meet™

EXECUTIVE COMMITTEE

STANLEY SWIERZ, PRESIDENT
COLUMBUS

RANDY BATES, 1ST VICE PRESIDENT
CAMBRIDGE

ADAM CONWAY, 2ND VICE PRESIDENT
CAMBRIDGE

TOM BROWN, 3RD VICE PRESIDENT
LUCASVILLE

JEFF HOSELTON, IMMEDIATE PAST PRESIDENT
CHILLICOTHE

DAVID BERGMAN, TREASURER
WESTERVILLE

BRAD PERKINS, EXECUTIVE DIRECTOR
ZANESVILLE

BOARD OF TRUSTEES

RUDY BRANDT, HAYDENVILLE, WV

ERIC DOLL, SOUTHTON

JEFF JENKINS, CHILLICOTHE

MIKE KROL, CIRCLEVILLE

MARTIN MCCUTCHEON, COLUMBUS

CASSANDRA RIDENOUR, GRATIOT

BOB ROMIG, WOOSTER

ALAN SMITH, THURMAN

JAMES STAFFORD, ZANESVILLE

ALLEN TROYER, BERLIN

ALAN WALTER, CARROLLTON

IRENE MOORE, STEUBENVILLE

JARED LUTE, LUCASVILLE

FEATURING

WELCOME	4
SCHEDULE OF EVENTS	6
EXHIBITOR LISTING	10
OUTDOOR MAP	18
INDOOR MAP	19
PAUL BUNYAN SHOW SM MERCHANDISE	21
FOOD VENDOR LISTINGS	21
SAWMILL & WOODLOT SEMINAR REGISTRATION	23
EXHIBITOR PRODUCT LISTINGS	24

McCORMICK & SONS INC.

BOX 417 GRACE STREET
BETHESDA, OHIO 43719, USA

Phone: 1-740-484-4523 FAX: 1-740-484-4371

FACTORY SALES AND SERVICE FOR:

- Simonds Industries
- Radiac Abrasives
- Frick Co.
- Meadows Mills Inc
- Hanchett Mfg.
- Edmiston Hydraulics
- Lumberline Lasers
- Morbark Industries
- Mellott Mfg.

MILL FABRICATIONS, LAYOUTS, AND ELECTRICAL
INSTALLATIONS WORLDWIDE

LOG ON WITH TAJFUN!



Log Loader

Telescoping boom, 23' reach, 390° rotation.

Grapplers

Designed for heavy duty, professional use.



3 pt. hitch Winches

Turn your tractor into a skidder.



3 pt. hitch Firewood Processors

Cut, split & load 2+ cords per hour.

Essentials from **TAJFUN** make wood processing simple.

Contact us by phone or email

800-634-5557

info@oescoinc.com

For a full list of dealers, see our website at
www.oescoinc.com and click on "Logging
Winches & Firewood Processors"

63
YEARS

Supplying Growers, Gardeners

OESCO INC.
and Groundskeeping Professionals. Since 1954

P.O. Box 540, Rt. 116/8 Ashfield Road, Conway, MA 01341

LETTER FROM THE PRESIDENT

Welcome to The 2017 Paul Bunyan Show, the largest and oldest forest industry show in The United States.

This 60th showing focuses on education, technology, products, services and entertainment associated with the forest industry.

With over 140 exhibitors, The Paul Bunyan Show represents all aspects of forest products and equipment in the industry.

So, visit with the exhibitors as they demonstrate their products and equipment, attend our educational sessions, and be sure to watch the exciting competitions we have lined up for you. Enjoy the day as you experience an industry that is vital to our economy, our environment and our quality of life.

And, last but not least, be sure to attend the Wood Auction on Sunday at 2:00 PM where all of the wood processed throughout the weekend will be up for sale to the highest bidder.

On behalf of all of our sponsors, exhibitors, and the staff and members of the Ohio Forestry Association, we welcome you to The 2017 Paul Bunyan Show!

Stanley Swierz
President, Ohio Forestry Association

The mission of The Paul Bunyan ShowSM is to provide access to current knowledge and technology which enhances the quality of life and market competitiveness of individuals, families, industries, and communities. This mission is accomplished by showcasing research, products, services, and experience through educational exhibits, presentations, and demonstrations on the forest industries, natural resources and lifestyles.

PUBLISHED BY:

OHIO FORESTRY ASSOCIATION, INC.
1100-H Brandywine Blvd., Zanesville, OH 43701-7303
Ph: 888-388-7337 • Fx: 740-452-2552
Toll Free: 888-38-TREES
Email: info@ohioforest.org • Website: www.ohioforest.org

EDITED BY:

Gayla Fleming, Event Manager
Brad Perkins, Executive Director
Design and Layout By: Mediaworks Marketing, Inc., Dublin, OH
Photography by Juan Velez, Jim Snyders and Cheri Brent
Copyright © 2017 Ohio Forestry Association, Inc.
All rights reserved. Material may not be reproduced without the express written permission of OFA.



BECOME A MEMBER TODAY

See Us at the Membership Booth
In the Exhibit Hall Two

OHIO FORESTRY ASSOCIATION STAFF

BRAD PERKINS, Executive Director
Brad@OhioForest.org

GAYLA FLEMING, Event Manager
Gayla@OhioForest.org

DENISE BROSIE, Assistant Event Manager
Denise@OhioForest.org

JOHN DORKA, Master Logger Program Coordinator
John@OhioForest.org

JO ANDERSON, Receptionist
Jo@OhioForest.org



EVENT STAFF

EVENT MANAGER

Gayla Fleming
Ohio Forestry Association, Inc.

ASSISTANT EVENT MANAGER

Denise Brosie
Ohio Forestry Association, Inc.

WOOD MANAGER

Jason Good
Superior Hardwood of Ohio, Inc.

EDUCATION HALL

Dan Castellucci
Muskingum Watershed Conservancy District

HEAD EQUIPMENT OPERATOR

Ron Colvin
Ron Colvin Enterprises

OHIO & INTERNATIONAL LUMBERJACK COMPETITION

Mike Sullivan
STIHL

LOADER COMPETITION

Tony Machamer
Superior Hardwoods of Ohio, Inc.

TRUCK CRUISE-IN

Ron Colvin
Colvin Enterprises

2017 GREAT PORTABLE SAWMILL SHOOTOUT™

Walter Andrzejewski
Dave Boyt
S & W Publishing

COMMITTEE MEMBERS

CO-CHAIRMEN

Emmett Conway, Jr. – Superior Hardwoods of Ohio, Inc.
Jim Doll – Doll Lumber Co., Inc.

COMMITTEE

Walter Andrzejewski – S & W Publishing
Dianne Barnes – Barnes Consulting
Randy Bates – Murphy Tractor and Equipment Co.
Dave Bergman
Dan Castellucci – Frontier Woodland Services, LLC
Jason Good – Superior Hardwoods of Ohio, Inc.
Mike Hopkins – Bryan Equipment Sales, Inc.
Brian Lowe – Husqvarna
John Marshall – Guernsey County Fairgrounds
Ryan Redoutey – Redoutey Logging
Debbie Robinson – Cambridge/Guernsey County VCB
Trent Yoder – Yoder Lumber Company, Inc.

INSPIRED BY TRADITION. POWERED BY INNOVATION.
THE OHIO FORESTRY ASSOCIATION



#1 Selling Brand of Gasoline-Powered Handheld Outdoor Power Equipment ^{*}
in America

STIHL

FS 56 RC-E
TRIMMER
\$219⁹⁵



★★★★★

"Reliable and tough with Easy2Start™ and ease of handling thrown in. It's a combination that's hard to beat."

– user Mac58



MS 170
CHAIN SAW
\$179⁹⁵



★★★★★

"I'm glad I went with the 170--the price and reliability are outstanding."

– user prutsmanbros93

Available at participating retailers while supplies last. *The actual listed guide bar length can vary from the effective cutting length based on which powerhead it is installed on. © 2015 STIHL



BG 50
HANDHELD
BLOWER
\$139⁹⁵



★★★★★

"It is a great piece of equipment for the price, plus with the STIHL name, it has dependability I can count on."

– user TL805

FS 38 TRIMMER
\$129⁹⁵

★★★★★

"I couldn't be more happy with the product. It fires right up, runs strong and is effortless to operate."

– user Smitty44



Indicates products that are built in the United States from domestic and foreign parts and components.

*"Number one selling brand" is based on syndicated Irwin Broh Research as well as independent consumer research of 2009-2015 U.S. sales and market share data for the gasoline-powered handheld outdoor power equipment category combined sales to consumers and commercial landscapers.

Check out these reviews and others on the product pages at STIHL.dealers.com.

JOIN US. #RealSTIHL



SCHEDULE OF EVENTS



FRIDAY, OCTOBER 6

- 8:00 AM OPENING CEREMONIES
- 9:00 AM OHIO MASTER LOGGER RE-CERTIFICATION (ADDITIONAL FEE APPLIES, PRE-REGISTRATION REQUIRED, MASTER LOGGERS ONLY)
This class satisfies Master Logger Re-certification requirements for Chainsaw, Best Management Practices and General Subject. **LOCATION:** Education Hall
- 9:30 AM BASICS OF HARDWOOD LUMBER GRADING (ADDITIONAL FEE APPLIES, PURCHASE TICKETS AT OHIOFOREST.ORG OR SHOW OFFICE)
This seminar will introduce participants to the standard grading rules of the National Hardwood Lumber Grading and demonstrate how they are applied. Participants are expected to participate in the application of the grading rules. Bring a calculator and something to write with. This course provides a good foundation for both the sawing for grade and edging courses. **PRESENTER:** Brian H. Bond is a Professor and Extension Specialist in the Department of Sustainable Biomaterials at Virginia Tech **LOCATION:** Guernsey County Soil & Water Conservation Building
- 10:00 AM GREAT LAKES TIMBER SHOW
This lumberjack show features chainsaw carving, axe throwing, wood chopping, one- and two-man crosscut sawing, modified chainsawing, log rolling and loads of clean family humor. **LOCATION:** Bunyan Blvd., South end of Fairgrounds **SPONSORED BY:** H & H Land Clearing and Rudd Equipment
- 10:00 AM CHIPPER/GRINDER DEMONSTRATIONS
Watch whole tree chippers and grinders in operation. **LOCATION:** Chipper/Grinder Demo Area, North end of track
- 10:45 AM AEP LINEMAN SAFETY DEMONSTRATION (Following Great Lakes Timber Show)
AEP linemen will perform an informative demonstration about the do's and don'ts of working around power lines. **LOCATION:** Bunyan Blvd., South end of Fairgrounds
- 11:00 AM CHAINSAW MAINTENANCE AND PERFORMANCE
Join the folks from Husqvarna and Arbor Masters for an informative demonstration on how to maintain your chainsaw and keep it running at its best. **LOCATION:** Husqvarna Chainsaw Arena **SPONSORED BY:** Husqvarna
- 11:15 AM ANTIQUE CHAINSAW DEMONSTRATIONS (FOLLOWING AEP DEMONSTRATION)
House-O-Saws will showcase and demonstrate their antique chainsaw collection. **LOCATION:** Bunyan Blvd., South end of Fairgrounds
- 12:00 PM PRECISION TREE FELLING
Husqvarna and Arbor Masters will demonstrate how to fell a tree safely and land it accurately. **LOCATION:** Husqvarna Chain Saw Arena **SPONSORED BY:** Husqvarna
- 12:00 PM CHIPPER/GRINDER DEMONSTRATIONS
Watch whole tree chippers and grinders in operation. **LOCATION:** Chipper/Grinder Demo Area, North end of track
- 12:00 PM GREAT LAKES TIMBER SHOW
This lumberjack show features chainsaw carving, axe throwing, wood chopping, one- and two-man crosscut sawing, modified chainsawing, log rolling and loads of clean family humor. **LOCATION:** Bunyan Blvd., South end of Fairgrounds **SPONSORED BY:** H & H Land Clearing and Rudd Equipment
- 12:30 PM SAWING FOR GRADE AND PATTERNS IN HARDWOODS - PART 1 (ADDITIONAL FEE APPLIES, PURCHASE TICKETS AT OHIOFOREST.ORG OR SHOW OFFICE)
Various sawing patterns are used to maximize the value of material produced from a hardwood log. In this session different sawing methods will be discussed, including grade sawing and quater sawing. Part 1 of this session will focus on presenting and discussing the methods and Part 2 will focus on sawing exercises to demonstrate the topics presented and allow the participants to apply their newly-learned knowledge. **PRESENTER:** Brian H. Bond is an Associate Professor and Extension Specialist in the Department of Sustainable Biomaterials at Virginia Tech **LOCATION:** Guernsey County Soil & Water Conservation Building
- 12:45 PM AEP LINEMAN SAFETY DEMONSTRATION (FOLLOWING GREAT LAKES TIMBER SHOW)
AEP linemen will perform an informative demonstration about the do's and don'ts of working around power lines. **LOCATION:** Bunyan Blvd., South end of Fairgrounds
- 1:00 PM THE 2017 GREAT SAWMILL SHOOTOUT™
Portable Sawmills race to saw the most wood in the shortest amount of time. **LOCATION:** Shootout Arena **SPONSORED BY:** Independent Sawmill & Woodlot Magazine
- 1:00 PM OHIO STATE LUMBERJACK COMPETITION
Watch as lumberjacks from the State of Ohio compete in horizontal chopping, open chainsaw, axe throwing and cross-cut sawing (2 person and Jack & Jill). *Open to Ohio residents only.* **LOCATION:** Skills Stadium **SPONSORED BY:** Columbus Equipment Company, STIHL, Bryan Equipment
- 1:15 PM ANTIQUE CHAINSAW DEMONSTRATIONS (FOLLOWING AEP DEMONSTRATION)
House-O-Saws will showcase and demonstrate their antique chainsaw collection. **LOCATION:** Bunyan Blvd., South end of Fairgrounds
- 2:00 PM GREAT LAKES TIMBER SHOW
This lumberjack show features chainsaw carving, axe throwing, wood chopping, one- and two-man crosscut sawing, modified chainsawing, log rolling and loads of clean family humor. **LOCATION:** Bunyan Blvd., South end of Fairgrounds **SPONSORED BY:** H & H Land Clearing and Rudd Equipment

- 2:00 PM CHIPPER/GRINDER DEMONSTRATIONS
Watch whole tree chippers and grinders in operation. **LOCATION:** Chipper/Grinder Demo Area
- 2:30 PM ARBORIST CLIMBING TECHNIQUES
Husqvarna and Arbor Masters demonstrate arborist climbing safety and techniques. **LOCATION:** Husqvarna Chain Saw Arena **SPONSORED BY:** Husqvarna
- 2:45 PM AEP LINEMAN SAFETY DEMONSTRATION (FOLLOWING GREAT LAKES TIMBER SHOW)
AEP linemen will perform an informative demonstration about the do's and don'ts of working around power lines. **LOCATION:** Bunyan Blvd., South end of Fairgrounds
- 3:00 PM SAWING FOR GRADE AND PATTERNS IN HARDWOODS - PART 2 (ADDITIONAL FEE APPLIES, PURCHASE TICKETS AT OHIOFOREST.ORG OR SHOW OFFICE)
Various sawing patterns are used to maximize the value of material produced from a hardwood log. In this session different sawing methods will be discussed, including grade sawing and quarter sawing. Part 1 of this session will focus on presenting and discussing the methods and Part 2 will focus on sawing exercises to demonstrate the topics presented and allow the participants to apply their newly-learned knowledge. **PRESENTER:** Brian H. Bond is an Associate Professor and Extension Specialist in the Department of Sustainable Biomaterials at Virginia Tech **LOCATION:** Guernsey County Soil & Water Conservation Building
- 3:15 PM ANTIQUE CHAINSAW DEMONSTRATIONS (FOLLOWING AEP DEMONSTRATION)
House-O-Saws will showcase and demonstrate their antique chainsaw collection. **LOCATION:** Bunyan Blvd., South end of Fairgrounds
- 3:30 PM PRECISION TREE FELLING
Husqvarna and Arbor Masters will demonstrate how to fell a tree safely and land it accurately. **SPONSORED BY:** Husqvarna
- 4:00 PM GREAT LAKES TIMBER SHOW
This lumberjack show features chainsaw carving, axe throwing, wood chopping, one- and two-man crosscut sawing, modified chainsawing, log rolling and loads of clean family humor. **SPONSORED BY:** H & H Land Clearing and Rudd Equipment **LOCATION:** Bunyan Blvd., South end of Fairgrounds
- 4:00 PM CHIPPER/GRINDER DEMONSTRATIONS
Watch whole tree chippers and grinders in operation. **LOCATION:** Chipper/Grinder Demo Area
- 5:00 PM SHOW CLOSES

SATURDAY, OCTOBER 7

- 8:00 AM OPENING CEREMONIES
- 9:30 AM GUIDELINES FOR EDGING HARDWOOD LUMBER (ADDITIONAL FEE APPLIES, PURCHASE TICKETS AT OHIOFOREST.ORG OR SHOW OFFICE)
Hardwood lumber is typically sold random width, with both edges being sawn square rather than rounded. This presentation will discuss how to determine the proper width for edging lumber to achieve the widest lumber and highest grade based on the National Hardwood Lumber grading rules. Practical guidelines will be presented on how to apply the concepts in a production situation. **PRESENTER:** Brian H. Bond is an Associate Professor and Extension Specialist in the Department of Sustainable Biomaterials at Virginia Tech **LOCATION:** Guernsey County Soil & Water Conservation Building
- 10:00 AM THE 2017 GREAT SAWMILL SHOOTOUT™
Portable Sawmills race to saw the most wood in the shortest amount of time. **LOCATION:** Shootout Arena **SPONSORED BY:** Independent Sawmill & Woodlot Magazine
- 10:00 AM GREAT LAKES TIMBER SHOW
This lumberjack show features chainsaw carving, axe throwing, wood chopping, one- and two-man crosscut sawing, modified chainsawing, log rolling and loads of clean family humor. **LOCATION:** Bunyan Blvd., South end of Fairgrounds **SPONSORED BY:** H & H Land Clearing and Rudd Equipment
- 10:00 AM CHIPPER/GRINDER DEMONSTRATIONS
Watch whole tree chippers and grinders in operation. **LOCATION:** Chipper/Grinder Demo Area
- 10:00 AM BOBTAILS & BOOM TRUCK CRUISE IN
Truck-owners from around the state will stop in to show off their rigs! Be sure to check them out and vote for your favorite. Voting will take place from 10:00 AM - 3:00 PM, and prizes will be awarded at 3:30 PM. **LOCATION:** behind the Grandstands **SPONSORED BY:** Ron Colvin Enterprises and Bills Towing
- 10:00 AM MUSICAL ENTERTAINMENT BY BAREFOOT MCCOY
Stop by and listen for a while to the musical talent of *Barefoot McCoy*, an American singer-songwriter and musician. Barefoot's genre is a unique blend of singer-songwriter, folk-rock, and blues that often resonates with the interior and exterior trials and tribulations of life. **LOCATION:** Pavilion behind the Grandstands **SPONSORED BY:** Ron Colvin Enterprises and Bills Towing
- 10:00 AM LOG LOADER COMPETITION
Watch as skilled loader operators move a series of logs from one bunker to the next in this exciting timed event. Experienced operators only. **LOCATION:** Skills Stadium **SPONSORED BY:** Murphy Tractor, John Deere Forestry Equipment
- 10:30 AM CHAINSAW MAINTENANCE AND PERFORMANCE
Join the folks from Husqvarna and Arbor Masters for an informative demonstration on how to maintain your chainsaw and keep it running at its best. **LOCATION:** Husqvarna Chainsaw Arena **SPONSORED BY:** Husqvarna
- 10:30 AM THE LAND AS YOUR LEGACY PROGRAM
The Land as your Legacy Program, sponsored by Nationwide Insurance, helps landowners start down the path of protecting your farm for future generations. **LOCATION:** Education Hall
- 10:45 AM AEP LINEMAN SAFETY DEMONSTRATION (FOLLOWING GREAT LAKES TIMBER SHOW)
AEP linemen will perform an informative demonstration about the do's and don'ts of working around power lines. **LOCATION:** Bunyan Blvd., South end of Fairgrounds
- 11:15 AM ANTIQUE CHAINSAW DEMONSTRATIONS (FOLLOWING AEP DEMONSTRATION)
House-O-Saws will showcase and demonstrate their antique chainsaw collection. **LOCATION:** Bunyan Blvd., South end of Fairgrounds
- 11:30 AM PRECISION TREE FELLING
Husqvarna and Arbor Masters will demonstrate how to fell a tree safely and land it accurately. **LOCATION:** Husqvarna Chain Saw Arena **SPONSORED BY:** Husqvarna

- 11:30 AM** **INVASIVE SPECIES UPDATE**
Join us for an update on some of the invasive pests that have invaded our woods. Learn about their current status as well as what might be on the horizon. **LOCATION:** Education Hall
- 12:00 PM** **GREAT LAKES TIMBER SHOW**
This lumberjack show features chainsaw carving, axe throwing, wood chopping, one- and two-man crosscut sawing, modified chainsawing, log rolling and loads of clean family humor. **SPONSORED BY:** H & H Land Clearing and Rudd Equipment
- 12:00 PM** **CHIPPER/GRINDER DEMONSTRATIONS**
Watch whole tree chippers and grinders in operation. **LOCATION:** Chipper/Grinder Demo Area
- 12:30 PM** **DRYING OPTIONS FOR THE SMALL OPERATOR (ADDITIONAL FEE APPLIES, PURCHASE TICKETS AT OHIOFOREST.ORG OR SHOW OFFICE)**
The price of properly kiln-dried lumber is often double the price of green lumber, and being able to supply dry lumber increases the number of markets that one can sell to. This seminar will cover the basic information that a small operator should know and consider regarding the drying of hardwood and softwood lumber, including suggested drying methods and equipment for small operators, the basics of how wood dries, and defects associated with drying. **PRESENTER:** Brian H. Bond is an Associate Professor and Extension Specialist in the Department of Sustainable Biomaterials at Virginia Tech **LOCATION:** Guernsey County Soil & Water Conservation Building
- 12:45 PM** **AEP LINEMAN SAFETY DEMONSTRATION (FOLLOWING GREAT LAKES TIMBER SHOW)**
AEP linemen will perform an informative demonstration about the do's and don'ts of working around power lines. **LOCATION:** Bunyan Blvd., South end of Fairgrounds
- 1:15 PM** **ANTIQUE CHAINSAW DEMONSTRATIONS (FOLLOWING AEP DEMONSTRATION)**
House-O-Saws will showcase and demonstrate their antique chainsaw collection. **LOCATION:** Bunyan Blvd., South end of Fairgrounds
- 1:30 PM** **INTERNATIONAL LUMBERJACK COMPETITION**
Lumberjacks from the United States and beyond will show their skills in this action packed competition. Athletes will compete in the underhand chop, open chainsaw, axe throwing, standing block, spring board, Jack and Jill crosscut, two person crosscut and always a fan favorite the hot saws, and new this year, the Jill and Jill crosscut, and women's underhand chop. The Paul Bunyan Show will also be the home of the STIHL Timbersports National Championship Single Buck Event. The U.S. title in this event will be awarded at the Show! **LOCATION:** Skills Stadium **SPONSORED BY:** Columbus Equipment Company, STIHL, Bryan Equipment, STIHL Timbersports
- 2:00 PM** **GREAT LAKES TIMBER SHOW**
This lumberjack show features chainsaw carving, axe throwing, wood chopping, one- and two-man crosscut sawing, modified chainsawing, log rolling and loads of clean, family humor. **LOCATION:** Bunyan Blvd. South end of Fairgrounds. **SPONSORED BY:** H & H Land Clearing and Rudd Equipment
- 2:00 PM** **TREE FARM - A WAY OF LIFE**
Do you have what it takes? Come learn about what it means to be a Tree Farmer, and why others are so proud of the organization. **PRESENTER:** Allen Walter, Tree Farmer and Ohio Forestry Association Board Member **LOCATION:** Education Hall
- 2:00 PM** **CHIPPER/GRINDER DEMONSTRATIONS**
Watch whole-tree chippers and grinders in operation. **LOCATION:** Chipper/Grinder Demo Area
- 2:30 PM** **ARBORIST CLIMBING TECHNIQUES**
Husqvarna and Arbor Masters demonstrate arborist climbing safety and techniques. **LOCATION:** Husqvarna Chain Saw Arena **SPONSORED BY:** Husqvarna
- 2:45 PM** **AEP LINEMAN SAFETY DEMONSTRATION (FOLLOWING GREAT LAKES TIMBER SHOW)**
AEP linemen will perform an informative demonstration about the do's and don'ts of working around power lines. **LOCATION:** Bunyan Blvd., South end of Fairgrounds
- 3:00 PM** **UNDERSTANDING WOOD AND WATER FOR WOODWORKERS (ADDITIONAL FEE APPLIES, PURCHASE TICKETS AT OHIOFOREST.ORG OR SHOW OFFICE)**
Wood is a wonderful raw material to work with, but it does have some unique features that can lead to problems while processing and in use. This seminar will discuss one of the main issues related to the use of wood — moisture content and its changes. **TOPICS INCLUDE:** an understanding of water in wood, how to measure water in wood, how moisture meters work, the differences in moisture meters, what will wood do at different humidity conditions, why wood shrinks and swells, and how to calculate how much it will change with changing conditions. **PRESENTER:** Brian H. Bond is an Associate Professor and Extension Specialist in the Department of Sustainable Biomaterials at Virginia Tech **LOCATION:** Guernsey County Soil & Water Conservation Building
- 3:15 PM** **ANTIQUE CHAINSAW DEMONSTRATIONS (FOLLOWING AEP DEMONSTRATION)**
House-O-Saws will showcase and demonstrate their antique chainsaw collection. **LOCATION:** Bunyan Blvd., South end of Fairgrounds
- 3:30 PM** **PRECISION TREE FELLING**
Husqvarna and Arbor Masters will demonstrate how to fell a tree safely and land it accurately. **LOCATION:** Husqvarna Chain Saw Arena. **SPONSORED BY:** Husqvarna
- 4:00 PM** **GREAT LAKES TIMBER SHOW**
This lumberjack show features chainsaw carving, axe throwing, wood chopping, one- and two-man crosscut sawing, modified chainsawing, log rolling and loads of clean family humor. **LOCATION:** Bunyan Blvd., South end of Fairgrounds **SPONSORED BY:** H & H Land Clearing and Rudd Equipment
- 4:00 PM** **CHIPPER/GRINDER DEMONSTRATIONS**
Watch whole tree chippers and grinders in operation. **LOCATION:** Chipper/Grinder Demo Area
- 5:00 PM** **SHOW CLOSES**

THANK YOU FOR ATTENDING!

SUNDAY, OCTOBER 8

- 9:00 AM SHOW OPENS
- 10:00 AM GREAT LAKES TIMBER SHOW
This lumberjack show features chainsaw carving, axe throwing, wood chopping, one- and two-man crosscut sawing, modified chainsawing, log rolling and loads of clean family humor. LOCATION: Bunyan Blvd., South end of Fairgrounds SPONSORED BY: H & H Land Clearing and Rudd Equipment
- 10:00 AM PRECISION TREE FELLING
Husqvarna and Arbor Masters will demonstrate how to fell a tree safely and land it accurately. LOCATION: Husqvarna Chain Saw Arena SPONSORED BY: Husqvarna
- 10:00 AM CHIPPER/GRINDER DEMONSTRATIONS
Watch whole tree chippers and grinders in operation. LOCATION: Chipper/Grinder Demo Area
- 10:30 AM TIMBER HARVEST PROSPECTIVES
Join us as we have professional foresters, loggers and landowners for a panel discussion about the timber harvesting process. Each will explain their role, before we open the panel for questions. LOCATION: Education Hall
- 10:45 AM AEP LINEMAN SAFETY DEMONSTRATION (FOLLOWING GREAT LAKES TIMBER SHOW)
AEP linemen will perform an informative demonstration about the do's and don'ts of working around power lines. LOCATION: Bunyan Blvd., South end of Fairgrounds
- 11:00 AM SKID STEER RODEO (CONTESTANT PRE-REGISTRATION REQUIRED BY 5 PM, SATURDAY, OCTOBER 7)
You won't want to miss this exciting event. Experienced operators will show their skill and maneuverability at pipe rolling, pallet stacking, pick and carry, golf shot and cone weave. If you are an experienced operator and would like to compete be sure to pre-register at the OFA Office at the Show. LOCATION: Shootout Arena SPONSORED BY: Murphy Tractor, John Deere Forestry Equipment, Northwest Hardwoods
- 11:15 AM ANTIQUE CHAINSAW DEMONSTRATIONS (FOLLOWING AEP DEMONSTRATION)
House-O-Saws will showcase and demonstrate their antique chainsaw collection. LOCATION: Bunyan Blvd., South end of Fairgrounds
- 11:30 PM MANAGING YOUR FOREST FOR WILDLIFE HABITAT AND TIMBER PRODUCTION
You do not have to choose between managing your forestland for timber or wildlife. Spend some time with ODNR, Division of Forestry Service Forester Jeremy Scherf as he covers some tips and techniques you can use to improve your forest while also increasing the quality of your wildlife habitat. LOCATION: Education Hall
- 12:00 PM GREAT LAKES TIMBER SHOW
This lumberjack show features chainsaw carving, axe throwing, wood chopping, one and two-man crosscut sawing, modified chainsawing, log rolling and loads of clean family humor. LOCATION: Bunyan Blvd., South end of Fairgrounds SPONSORED BY: H & H Land Clearing and Rudd Equipment
- 12:00 PM CHIPPER/GRINDER DEMONSTRATIONS
Watch whole tree chippers and grinders in operation. LOCATION: Chipper/Grinder Demo Area
- 12:45 PM AEP LINEMAN SAFETY DEMONSTRATION (FOLLOWING GREAT LAKES TIMBER SHOW)
AEP linemen will perform an informative demonstration about the do's and don'ts of working around power lines. LOCATION: Bunyan Blvd., South end of Fairgrounds
- 1:00 PM WOMEN'S AMATEUR CHAINSAW COMPETITION (PRE-REGISTER AT THE HUSQVARNA BOOTH BY 10:00 AM)
Ladies, you won't want to miss this! Never ran a saw before? No problem, the folks at Husqvarna will get you schooled in safe operation. Be sure to sign up at the Husqvarna booth by 10:00 AM. The winner takes home a brand new Husqvarna chainsaw, and everyone takes home something! Husqvarna provides all of the safety equipment, but you must have closed-toe shoes to compete. LOCATION: Husqvarna Chainsaw Arena SPONSORED BY: Husqvarna
- 1:00 PM TREE IDENTIFICATION
Gather round to learn about the common tree species in Ohio! Clayton Rico, Local forester for the Muskingum Watershed Conservancy District, will be presenting a hands-on dendrology (tree ID) class that is fun for all ages! PRESENTED BY: Kaylynn Kotlar, Muskingum Watershed Conservancy District LOCATION: Education Hall
- 1:15 PM ANTIQUE CHAINSAW DEMONSTRATIONS (FOLLOWING AEP DEMONSTRATION)
House-O-Saws will showcase and demonstrate their antique chainsaw collection. LOCATION: Bunyan Blvd., South end of Fairgrounds
- 2:00 PM GREAT LAKES TIMBER SHOW
This lumberjack show features chainsaw carving, axe throwing, wood chopping, one and two-man crosscut sawing, modified chainsawing, log rolling and loads of clean family humor. LOCATION: Bunyan Blvd., South end of Fairgrounds SPONSORED BY: H & H Land Clearing and Rudd Equipment
- 2:00 PM CHIPPER/GRINDER DEMONSTRATIONS
Watch whole tree chippers and grinders in operation. LOCATION: Chipper/Grinder Demo Area
- 2:00 PM WOOD AUCTION
Need wood? Then you will definitely want to get in on the Wood Auction action. All timber processed throughout the show will be sold to the highest bidder. Firewood, sawn lumber and more! LOCATION: Meet at The Paul Bunyan Show Office in front of Exhibit Hall 2 at 1:45 to participate.
- 3:00 PM SHOW CLOSES

SEE YOU OCTOBER 5-7, 2018!



2017 PAUL BUNYAN SHOW EXHIBITOR LISTING



**BOOTH/LOT# GR2
AGGCORP**

22800 Lakeland Blvd.
Cleveland, OH 44132
Phone: (614) 309-6854
Toll free: (844) 2-AGGCORP
Fax: (216) 803-3901
www.aggcorp.net
Chippers, grinders

**BOOTH/LOT# 420
ALL ACCESS EQUIPMENT**

891 Woburn St.
Wilmington, MA 1887
Phone: (978) 712-4950
www.allaccessequipment.com
Tracked aerial lift

**BOOTH/LOT# 135
ALLIANCE TIRE AMERICAS, INC.**

201 Edgewater Dr., Ste. #285
Wakefield, MA 1880
Phone: (781) 321-3910 x215
Tires for forestry equipment and machinery

**BOOTH/LOT# 449
AMERICAN CLS, INC.**

PO Box 619
Honeoye, NY 14471
Phone: (315) 773-4460
www.americancls.com
Logsplitters, conveyors

**BOOTH/LOT# H18
AMERICAN LUMBER & PALLET**

PO Box 1136
Fayetteville, TN 37334-1136
Phone: (800) 992-3432 x 4
Publication

**BOOTH/LOT# H21
AMSOIL**

4474 County Rd. 124
Cardington, OH 43315
Phone: (419) 947-9300
Premium synthetic lubricants, fuel additives and filtration products

**BOOTH/LOT# B27
AQUASOLES BY TRISTAR MEDICAL
PRODUCTS LLC**

2441Q Old Fort Pkwy., Ste. #345
Murfreesboro, TN 37128
Phone: (615) 692-1583
www.aquasoles.com
Aquasoles massaging insoles

**BOOTH/LOT# H25
ARBORGEN, INC., SUPERTREE SEEDLINGS**

168 Lenox Pl.
Athens, GA 30606-3162
Phone: (912) 655-1725
Quality hardwood, pine, and wildlife shrub seedlings

**BOOTH/LOT# 121, 122
ARBORWEAR LLC**

8269 E Washington St.
Chagrin Falls, OH 44023
Toll free: (888) 578-8733
Phone: (440) 543-3300
Fax: (440) 543-3303
www.arborwear.com
Clothing for work and the outdoors

**BOOTH/LOT# 119, 120
ATWOOD ROPE**

121 N Trine St.
Canal Winchester, OH 43110-1154
Phone: (614) 920-0534
Rope (arbor)

**BOOTH/LOT# G34
BAD DOG TOOLS**

PO Box 851
Bristol, RI 02809-0998
Phone: (401) 253-1330
Specialty and multi-purpose tools for cutting and drilling

**BOOTH/LOT# BOOTH/LOT# 114
BAILEY'S, INC.**

1210 Commerce Ave., Ste. #8
Woodland, CA 95776
Phone: (707) 272-4075
Lucas Mill

**BOOTH/LOT# 463, 464, 470
BAKER & SONS EQUIPMENT CO.**

45381 State Route 145
Lewisville, OH 43754-9424
Phone: (740) 567-3317
Fax: (740) 567-3337
www.bakerandsons.com
Log skidders, log loaders, trailers, slashers, tub grinder, brush cutters, utility vehicles

**BOOTH/LOT# 416, 423
BAKER PRODUCTS**

PO Box 128
Ellington, MO 63638-0128
Phone: (573) 663-7711
www.bakerproducts.net
Portable band sawmill edgers, planers, notchers, band resaws, Wood Wizz planers and sanders

**BOOTH/LOT# 402, 408, 409, CH2, GR2
BANDIT INDUSTRIES, INC.**

6750 Millbrook Rd.
Remus, MI 49340-9600
Phone: (989) 561-2270 x444
www.banditchippers.com
Chippers and grinders

**BOOTH/LOT# G6
BATH FITTER**

878 Dryden
Zanesville, OH 43701
Phone: (740) 450-8945
www.bathfitter.com
Bathroom remodeling

**BOOTH/LOT# 412
BATTLE WAGON TRAILERS**

4646 E 1150 N
Decatur, IN 46733
Phone: (260) 701-0330
www.battlewagontrailers.com
Logging trailers

**BOOTH/LOT# 451, 456
BELL'S MACHINING, WELDING & HYDRAULICS**

2044 Rogers Rd.
Perth, ON K7H 1P9
Phone: (613) 267-1965
Firewood processors, conveyors, tumblers and splitters

**BOOTH/LOT# 477, 478
BLOCKBUSTER, INC.**

2756 Kentucky Ave.
Mount Pleasant, IA 52641-8072
Phone: (888) 775-4883
www.blockbuster-inc.com
Blockbuster firewood processors

**BOOTH/LOT# 309, 450
BROWNWOOD SALES**

2189 Refugee Rd.
Columbus, OH 43207-2842
Phone: (614) 443-1821
Timberwolf log splitters, processors and conveyors, Treeler dumping grapple trailers, Hud-Son sawmills, Tajfun logging winches, Hakki Pilke firewood processors, firewood bundlers

**BOOTH/LOT# 475
BRUTE FORCE MANUFACTURING**

N 648 Sunset Dr.
Dorchester, WI 54425
Phone: (715) 965-4680

**BOOTH/LOT# C1, C2, C3, C4, C5, C6, C7
BUCKEYE WOODTURNERS (BWWT)**

6580 Christman Rd.
Clinton, OH 44216
Phone: (330) 896-3687
Woodturning demonstrations

**BOOTH/LOT# H1
CAMBRIDGE/GUERNSEY COUNTY VCB**
627 Wheeling Ave., Ste. #200
Cambridge, OH 43725
Phone: (740) 432-2022
Information on Guernsey County

**BOOTH/LOT# WC1
CARVING-DREAMS**
4210 Dogwood Ln.
Zanesville, OH 43701
Phone: (740) 704-2259
www.carving-dreams.com
Chainsaw artist, carved bears, frogs, turtles,
books, and other creatures

**BOOTH/LOT# C9, C10
CEDAR, OAK, KOA & ASSOCIATES, LLC**
5120 Factory Rd.
Albany, OH 45710-9406
Phone: (740) 707-0246
High quality, hand made wood crafts, ornaments, wine
stoppers and more

**BOOTH/LOT# C13, C14
CENTRAL OHIO WOOD TURNERS**
815 Old Farm Rd.
Columbus, OH 43213
Phone: (614) 218-4397
Wood turning demonstrations

**BOOTH/LOT# 400, 401, 406, 407, CH3, GR1
COLUMBUS EQUIPMENT COMPANY**
2323 Performance Pkwy.
Columbus, OH 43207
Phone: (614) 443-6541
www.columbusequipment.com
Columbus Equipment Company and its Environmental
Division—featuring best-in-class manufacturers
Morbark, CMI, McCloskey International, Eagle Crusher,
Komatsu, Barko, and U.S. Pride PProducts—serving
a full range of customers' forestry and tree-care
equipment needs

**BOOTH/LOT# G4
COMSTOCK LOGGING SUPPLIES, INC.**
486 Shedd Rd.
Dolgeville, NY 13329
Toll free: (800) 579-6831
Phone: (315) 429-9898
Fax: (315) 429-7298
www.shopcomstocklogging.com
Oregon Products

**BOOTH/LOT# 471, 474
CORD KING**
2040 Rogers Rd.
Perth, ON K7H 1P9
Phone: (613) 267-0018
Fax: (613) 267-2202
www.cordking.ca
Cord King firewood processors and accessories

**BOOTH/LOT# 132
CROWN ROYAL STOVES - GREENTECH MFG., INC.**
PO Box 1237
2716 Crescent Dr., Ste. #2
International Falls, MN 56649
Toll free: (866) 361-7355
Phone: (218) 283-3416
Fax: (218) 283-5786
www.crownroyalstoves.com
Crown Royal Outdoor Burning Stoves

**BOOTH/LOT# 117
CUTCO CUTLERY**
322 Houghton Ave.
Olean, NY 14760
Phone: (716) 790-7181
Cutlery, culinary tools, bbq and garden tools, cookware,
flatware, scissors, sporting knives

**BOOTH/LOT# 506
DAVEY TREE EXPERT COMPANY**
1500 North Mantua
Kent, OH 44240-5193
Phone: (800) 445-8733
www.davey.com
The Davey Tree Expert Company, headquartered in
Kent, OH, is the largest full-service Tree Care provider
specializing in Residential/Commercial Tree care,
Commercial Grounds Management, Urban and Utility
Vegetation Management. Davy is employee owned.

**BOOTH/LOT# WCS
DAVID CREGO CHAINSAW ART**
9420 St. Rt. 37 E
Sunbury, OH 43074
Phone: (614) 578-1791
Chainsaw art

**BOOTH/LOT# G26
DIAMOND SAW WORKS**
12290 Olean Rd.
Chaffee, NY 14030
Toll free: (800) 828-1180
Phone: (716) 496-7417
Fax: (716) 496-6057
Band saw blades, reciprocating blades, jigsaw blades,
airsaw blades, holesaws, circular saws, power hacksaw
blades and hand hacksaw blades

**BOOTH/LOT# 452, 453, 457, 458
DYNA PRODUCTS**
6228 60th Ave.
Ewart, MI 49631-8586
Phone: (231) 734-4433
Firewood processor

**BOOTH/LOT# 131
ENGINE HOUSE POWER EQUIPMENT**
11955 East Pike Rd.
Cambridge, OH 43725
Phone: (740) 439-4449
Engine house power equipment

**BOOTH/LOT# C12
ENOVATIVE TECHNOLOGIES**
11935 Worcester Hwy.
Bishopville, MD 21813
Phone: (443) 863-6645
www.epulsemassage.com
TENS units

**BOOTH/LOT# 472
EZ BOARDWALK**
8218 Shelby 366
Emden, MO 63439
Phone: (660) 415-7800
Portable bandsaws

**BOOTH/LOT# C23
FANCY LEAF DESIGNS**
237 Haymont Dr.
Gibsonia, PA 15044
Phone: (412) 303-9128
www.fancyleafdesigns.com
Original, hand-crafted, polymer clay creations

**BOOTH/LOT# 441
FECON, INC.**
3460 Grant Rd.
Lebanon, OH 45036
Toll free: (800) 528-3113
Phone: (513) 696-4430
www.fecon.com
Bull Hog Mulchers, Tracked Carriers and Forestry
Mulchers

**BOOTH/LOT# H4
FENIX TACTICAL FLASHLIGHTS**
2484 Tevis Ann Ct.
Dublin, OH 43016
Phone: (614) 767-8576
The common thread in Fenix flashlights is respect. From
police, military and rescue personnel to deep-woods
sportsman, Fenix lights are purchased as serious
tactical tools around the world. This series of powerful
lights provides unmatched options.

**BOOTH/LOT# 507, 508, 509
GENERAL POWER EQUIPMENT**
2625 International St.
Columbus, OH 43228-4604
Phone: (614) 529-5950
www.generalpower.com
Chainsaws, trimmers, blowers, edgers,
hedge trimmers, chippers

**BOOTH/LOT# 306
GEORGE KAHLER SALES LLC**
4833 Rome New London Rd.
Rome, NY 13440-8517
Phone: (315) 336-3825
Chainsaws, safety apparel, Oregon saw chain, saw
accessories, Arborwear clothing

**BOOTH/LOT# G10
GRINDER WEAR PARTS & APOLLO EQUIPMENT**
2062 20th Ave. SE
Largo, FL 33771
Toll free: (800) 982-2844
www.grinderwearparts.com
Factory-direct tub and horizontal grinder wear parts,
authorized Hardox service center, wood processing
equipment brokerage

**BOOTH/LOT# 128
HARDY HEATERS**
12345 Rd. 505
Philadelphia, MS 39350-366
Toll free: (800) 542-7345
Phone: (601) 656-6557
www.hardyheater.com
Outside, wood-burning furnaces

**BOOTH/LOT# 141
HEATMASTERS/STEEL TECH INC.**
445 George Ave.
Winkler, MB R6W 4A5
Toll free: (877) 325-9792
Phone: (204) 325-9792
www.heatmasters.com
Indoor/outdoor furnaces

**BOOTH/LOT# 434, 435
HILL INTERNATIONAL TRUCKS**
47866 Y&O Rd.
East Liverpool, OH 43920
Phone: (330) 386-6440
www.hillintrucks.com
New and used International Trucks and MAC Trailers



2017 PAUL BUNYAN SHOW EXHIBITOR LISTING

(cont.)

**BOOTH/LOT# G24**

HMC CORP.
284 Maple St.
Contoocook, NH 03229-3339
Phone: (603) 746-4691
www.hmccorp.com
Indoor display

BOOTH/LOT# 123

HOTSY EQUIPMENT COMPANY
670 Harrison Dr.
Columbus, OH 43204-3506
Phone: (614) 274-6879
Pressure washers

BOOTH/LOT# 125

HUMMEL GROUP, INC.
PO Box 250
Berlin, OH 44610
Phone: (800) 686-2602
Insurance and financial services

BOOTH/LOT# 510, 511, 512, 513

HUSQVARNA
9335 Harris Corners Pkwy., Ste. #500
Charlotte, NC 28269-3830
Phone: (704) 562-6639
Chainsaws and chainsaw supplies, outdoor power equipment, safety equipment

BOOTH/LOT# G28, G29

INNOVATIVE FUNCTIONS, INC.
3200 S Bridge St.
Chillicothe, OH 45601-9361
Phone: (740) 773-2073
www.innovativefunctions.com

BOOTH/LOT# 424

INNOVATIVE TRAILERS
PO Box 6623
Texarkana, TX 75505-6623
Phone: (903) 832-6684
Fax: (903) 832-6909
www.ititrailers.com
Semi-trailers

BOOTH/LOT# G17

IRON BULL MFG. LLC
6064 N 350 E
Marshall, IN 47859
Phone: (765) 597-2480
Self-dumping hoppers

BOOTH/LOT# G12

KASCO WOODMAXX BLADES
1569 Tower Grove Ave.
St. Louis, MO 63110
Phone: (314) 771-1550
WoodMaxx premium bandsaw blades for thin kerf sawmills, and horizontal and vertical resaws

BOOTH/LOT# 503

KAUFMAN TRAILERS
702 N Silver St.
Lexington, NC 27292
Phone: (336) 790-6822
www.kaufmantrailers.com
Equipment and log trailers

BOOTH/LOT# 473

KILN-DIRECT
PO Box 159
Burgaw, NC 28425-0159
Phone: (910) 259-1624
Kilns

BOOTH/LOT# G35, G36

KINGFISH OUTDOOR GEAR LLC
5120 S Medina Line Rd.
Doylestown, OH 44230
Phone: (330) 313-1949
Outdoor gear—camping, fishing, hunting, survival, Ohio fur, trapping, etc.

BOOTH/LOT# G22, G23

THE KNIFESOURCE LLC
531 N Nelson Dr.
Fountain Inn, SC 29644
Phone: (864) 601-2300
Chipper knives and knife grinders

BOOTH/LOT# 454

LAONA MACHINE SUPPLY
4902 Hwy. 8
PO Box 38
Laona, WI 54541
Phone: (715) 674-3909
www.laonamachine.com
Safety equipment

BOOTH/LOT# 442

LEFT COAST SUPPLIES
1615B S Main St.
Willits, CA 95490
Phone: (888) 995-7307
Peterson portable sawmills

BOOTH/LOT# 446, 447

LINNDALE EQUIPMENT
3593 W US Hwy. 22
Wilmington, OH 45177
Phone: (937) 382-4549
Tractors, wood splitters, conveyors, wood chippers, Deutz, TYM, Vanmar, Automated Biomass Systems, Wallenstein

BOOTH/LOT# G8

LITS
PO Box 217
88 Jasper Rd.
Piketon, OH 45661
Phone: (740) 443-4364
Lumber Inventory Tracking System Software

BOOTH/LOT# 129

LOGGER WADE
10474 Taupe Rd.
Derby, IN 47525
Phone: (812) 719-5429
Hats, shirts, calendars and accessories

BOOTH/LOT# 431

LOGRITE TOOLS
101 Industrial Park Rd.
Vernon, CT 06066
Toll free: (800) 872-0864
Phone: (860) 870-5414
www.logrite.com
Log-handling tools, furniture legs

BOOTH/LOT# G7

LUMBERMAN'S EXCHANGE
PO Box 1916
Columbia, TN 38402
Phone: (801) 315-9950 x602
Publication

BOOTH/LOT# G18, G19

LUMBERMEN'S EQUIPMENT DIGEST
2508 Pillow Dr.
Columbia, TN 38401
Phone: (931) 381-1638
Buy, sell and trade journal

BOOTH/LOT# 504

MAKITA USA
2660 Burford Hwy.
Buford, GA 30518
Phone: (888) 842-2444
Outdoor power equipment, industrial tools

BOOTH/LOT# G13, G14, G15

MCCORMICK & SONS, INC.
PO Box 417
Bethesda, OH 43719-0417
Phone: (740) 484-4523
Sawmill equipment and supplies

BOOTH/LOT# G1

MENOMINEE SAW & SUPPLY
900 16th St., PO Box 515
Menominee, MI 49858-0515
Toll free: (800) 582-0470
Phone: (906) 863-2609
Fax: (906) 863-1147
www.menomineesaw.com
Sawmill equipment, supplies and services

BOOTH/LOT# 413

METSA MACHINES
236 S Genesee St.
Merrill, WI 54452
Phone: (507) 218-8401
www.metsamachines.com
Japa firewood processors, Ultratec ATV accessories

BOOTH/LOT# H7

MILLNER-HAUFFEN TOOL CO.
PO Box 121085
Nashville, TN 37212
Phone: (888) 365-3301
Grinding tools, cutting tools, drill bits, fabrication tools, DIY tools

BOOTH/LOT# 443, 448

MULTITEK NORTH AMERICA, LLC
PO Box 170
Prentice, WI 54556
Phone: (800) 243-5438
Firewood processor

BOOTH/LOT# 439, 440, 444

MURPHY TRACTOR & EQUIPMENT CO.
60611 Hulse Dr.
Cambridge, OH 43725-8937
Phone: (740) 439-2747
John Deere, Hitachi

BOOTH/LOT# 514
NEWLON'S INTERNATIONAL SALES, LLC
Rt 250 S Beverly Pike
Elkins, WV 26241
Phone: (304) 636-4561
Log trucks, loader trucks, Barko forestry equipment,
Serco forestry equipment, CSI, Robotec

BOOTH/LOT# H7
NEWPARK MATS & INTEGRATED SERVICES LLC
2900 Hwy. 93
Carencro, LA 70526
Phone: (337) 565-2132
www.newpark.com/mats
The largest, most experienced manufacturer of
heavy-duty composite matting systems in the world.

BOOTH/LOT# 411
NEW RIVER EQUIPMENT CORP.
7793 Pittsburg Ave. NW
North Canton, OH 44720-6947
Toll free: (866) 670-2444
Phone: (330) 494-1221
www.newriverequipment.com
The Revolution HD is a heavy-duty version of the
Revolution wheel that utilizes carbide infused, weld-on
wear strips to offer 2-5 times better wear resistance

BOOTH/LOT# 421
NORTHEAST IMPLEMENT
460 Halsey Valley Rd.
Spencer, NY 14883-9560
Toll free: (888) 589-6160
Phone: (607) 589-6160
Fax: (607) 589-4026
www.northeastimplement.com
Farm logging equipment, Valby grapples, chippers,
trailers, Posch firewood equipment

BOOTH/LOT# 429
NORWOOD SAWMILLS
252 Sonwil Dr.
Buffalo, NY 14225-5516
Phone: (705) 689-2818
www.norwoodsawmills.com
Portable band sawmills

BOOTH/LOT# E8
ODNR - DIVISION OF FORESTRY
345 Allen Ave.
Chillicothe, OH 45601
Phone: (740) 774-1596
Educational materials and displays about
forest management

BOOTH/LOT# 476
OESCO, INC.
PO Box 540
Conway, MA 01341-0540
Phone: (413) 369-4335
www.oescoinc.com
Tajfun wood processors

BOOTH/LOT# 455
OHIO CAT
3993 E Royalton Rd.
Broadview Heights, OH 44147-2898
Phone: (440) 526-6200
Caterpillar

BOOTH/LOT# E4
OHIO EPA
50 W Town St.
Columbus, OH 43215
Phone: (614) 644-2873
Ohio EPA Project WET

BOOTH/LOT# H15
OHIO FORESTRY ASSOCIATION
1100H Brandywine Blvd
Zanesville, OH 43701-7303
Phone: (888) 388-7334
Trade association representing the forest industry

BOOTH/LOT# 118
OHIO KNIFE
1448 Irmscher Blvd.
Celina, OH 45822
Toll free: (800) 475-5922
Phone: (419) 549-8200
www.ohioknifesales.com
Knives, machetes, hunting and custom fixed blades

BOOTH/LOT# E5
OHIO TREE FARM COMMITTEE
2105 Lone Tree Dr.
Findlay, OH 45840
Phone: (419) 889-1123
Woodland owner information

BOOTH/LOT# 414
PALFLEET TRUCK EQUIPMENT
4151 W SR 18
Tiffin, OH 44883
Phone: (419) 448-8156
www.palfleet.com
PALFINGER crane/truck arborist packages

BOOTH/LOT# H16
PAW-TAW-JOHN SERVICES, INC.
18125 N Ramsey Rd.
Rathdrum, ID 83858-8288
Phone: (208) 687-1478
Paw-Taw John Services, Inc. provides excellent service
and sales in the field of industrial motion control.
Offering MTS, Laharco, Encoder, test equipment, and
MTS laser and valve repair.

BOOTH/LOT# 415
PAYEUR INTERNATIONAL INC.
5379 Road 112
Ascot Corner, QC J0B1A0
Phone: (819) 434-2657
www.payeur.com
Payeur log loader trailer and the Forester Tractor

BOOTH/LOT# 403, 410, CH1, GR3
PETERSON PACIFIC
PO Box 40490
Eugene, OR 97404
Phone: (541) 689-6520
Chippers and grinders

BOOTH/LOT# 432, 433
PONSSE NORTH AMERICA, INC.
4400 International Ln.
Rhineland, WI 54501
Phone: (715) 369-4833
Forwarder

BOOTH/LOT# C27, C28
POPULAR POPLAR TOYS
10046 Proctor Creek Rd.
New Martinsville, WV 26155
Phone: (304) 455-2495
Wooden toys

BOOTH/LOT# C22
POSSUM PRODUCTS, LLC
9700 Stonecreek Rd. SW
Newcomerstown, OH 43832
Phone: (330) 447-7617
Hand-made wood toys

BOOTH/LOT# G20
POWERPURE LLC
PO Box 568
Mentor, OH 44061
Phone: (440) 290-2226
www.powerpurellc.com
Tire sealant

BOOTH/LOT# G9
PRECISION HUSKY CORP.
850 Markeeta Spur Rd.
Moody, AL 35004
Phone: (205) 640-5181
Fax: (205) 640-1147
www.precisionhusky.com
Sawmill equipment—chippers, screens,
debarkers, vibrating conveyors

BOOTH/LOT# H8
PREMIER BANDWHEEL & EQUIPMENT LTD.
6853 Chalet Ct.
Delta, BC V4E3C1
Phone: (604) 591-2080
New and used 20" to 108" diameter steel, cast or
aluminum bandsaw wheels for all bandmills

BOOTH/LOT# 445
QUALITY CRAFT TOOLS
8994 St. Rt. 73
Hillsboro, OH 45133-7978
Toll free: (800) 392-1188
Phone: (937) 393-4954
Fax: (937) 393-5657
www.qct.com
General logging tools, safety lights, tons of gloves, tire
repair, air tools, pullers, battery operated tools, and
much, much more!

BOOTH/LOT# 418, 419, 425, 426
RAYCO MFG., INC.
4255 Lincoln Way E
Wooster, OH 44691-8601
Toll free: (800) 392-2686
Phone: (330) 264-8699
Fax: (330) 264-3697
www.raycomfg.com
Rayco Manufacturing, Inc. is dedicated to the design
and production of the world's most innovative and
complete line of environmental equipment. Our current
product line includes: stump cutters, cutting tools,
forestry mulchers and site preparation machines.

BOOTH/LOT# 459, 460, 465, 466
RICER EQUIPMENT
49 Good Manor Rd.
Lucasville, OH 45648
Phone: (740) 289-4318
Tigercat

BOOTH/LOT# GR5
ROTOCHOPPER, INC.
217 West St., PO Box 295
Saint Martin, MN 56376-0295
Phone: (320) 548-3586
Horizontal wood grinders

BOOTH/LOT# 461
RUDD EQUIPMENT CO.
2512 Jackson Pike
Columbus, OH 43223
Phone: (614) 636-4050
Logging equipment, Volvo articulated trucks,
excavators, skid steers and wheel loaders



2017 PAUL BUNYAN SHOW EXHIBITOR LISTING

(cont.)

SUN OCT. 8 AT 2:00 PM

WOOD AUCTION

**BOOTH/LOT# 417
RYAN'S EQUIPMENT**
111 Quicksilver Ln.
Edmore, MI 48829
Phone: (989) 427-2829
Logging equipment

**BOOTH/LOT# 104
SAVE EDGE, INC.**
360 W Church St
Xenia, OH 45385-2948
Phone: (937) 376-8268
www.saveedge.com
Premium chainsaw files

**BOOTH/LOT# H22, H23
SAWMILL & WOODLOT MAGAZINE**
PO Box 408
Belfast, ME 04915-0408
Phone: (207) 338-0300
Trade publication

**BOOTH/LOT# 129
SEPPI M. USA**
9077 Gold Park Dr.
West Chester, OH 45011
Phone: (800) 681-1371
Forestry mulchers, forestry tillers, stone crushers,
mulching mowers for PTO-tractors, prime mowers and
excavators

**BOOTH/LOT# 515
SPLIT SECOND LOG SPLITTER**
809 S. Hamilton St.
Sullivan, IL 61951
Toll free: (800) 448-9282
Phone: (217) 728-8388
Fax: (217) 728-2032
www.splitsecondlogsplitter.com
Kinetic log splitter

**BOOTH/LOT# WC6
STEVE'S WOOD CRAFTS & SIGNS**
1880 Melon Hill Rd.
New Lexington, OH 43764
Phone: (740) 621-3414
Wood crafts—rustic wood benches, routed
signs, scroll work, fire pokers

**BOOTH/LOT# 502
STIHL PRO CARVING TEAM**
2215 E State St.
Fremont, OH 43420
Phone: (513) 248-2000
See the famous STIHL pro carvers in action!

**BOOTH/LOT# WC3, WC4
SUGAR RIDGE CARVING**
PO Box 61
Dalton, OH 44618
Phone: (330) 857-4019
www.sugarridgearts.com
Chainsaw sculptures

**BOOTH/LOT# 308
TIMBERWOLF MANUFACTURING CORP.**
2189 Refugee Rd.
Columbus, OH 43207-2842
Phone: (419) 624-9832
www.timberwolfcorp.com
Log splitters, firewood processors and conveyors

**BOOTH/LOT# 462
TIMBERLY LLC**
8233 Indy Ln.
Indianapolis, IN 46214
Phone: (317) 661-3861
www.timberly.com
Portable sawmills

**BOOTH/LOT# G31
TMS MACHINERY SALES**
301 N Johnson Ave.
Talladega, AL 35160
Phone: (256) 480-5084
Trade publication for all of your equipment needs

**BOOTH/LOT# 134
TRACKED LIFTS INC.**
183 Ruppert Rd.
East Berlin, PA 17316
Phone: (866) 543-8575
Compact aerial lifts

**BOOTH/LOT# G5
TREE & LANDSCAPE EQUIPMENT TRADER**
PO Box 398
Webster City, IA 50595
Phone: (515) 598-7293
Trade publication

**BOOTH/LOT# C24
TRINITY BAPTIST CHURCH**
9260 Cadiz Rd.
Cambridge, OH 43725
Phone: (740) 439-2963

**BOOTH/LOT# 505
TURBO SAWMILL/SPECTRUM INNOVATIONS LTD.**
2 Hynds Rd., Unit 3
Greerton, Tauranga, NZ 3112
Phone: (64) 7 5789771
Turbo sawmills

**BOOTH/LOT# 127
ULTIMATE OUTDOOR FURNACE LLC**
6885 Co. Rd. 6SW
Stewartville, MN 54976
Phone: (507) 254 0622
Fax: (507) 533 7865
www.ultimateoutdoorfurnace.com
Outdoor furnace

**BOOTH/LOT# C15
USDA APHIS, PPQ**
8995 E Main St.
Bromfield Bldg., Ste. #202
Reynoldsburg, OH 43068
Phone: (614) 322-4700
Federal government

**BOOTH/LOT# 467, 468
WOOD BEAVER FORESTRY**
PO Box 170
Prentice, WI 54556
Phone: (800) 243-5438
Wood Beaver forestry equipment

**BOOTH/LOT# 436, 437, 438, G21
WOOD-MIZER PRODUCTS, INC.**
8180 W 10th St.
Indianapolis, IN 46214-2430
Phone: (317) 808-0730
Sawmills, blades and support equipment

**BOOTH/LOT# 126
WOODCRACKER**
10 Prospect Ct.
Marblehead, MA 01945
Phone: (617) 480-6466
www.woodcracker.com
Tree sheers, stump sheers, logsplitters,
excavator attachments

**BOOTH/LOT# 99
WORK WEAR XPRESS**
1480 Morningstar Blvd.
Decatur, IN 46733-3808
Phone: (260) 728-4111
Work clothes, boots, hats, gloves, etc.

**BOOTH/LOT# H26, H27
YODER LUMBER COMPANY, INC.**
4515 Township Rd. 367
Millersburg, OH 44654-8885
Phone: (330) 893-3121
Fax: (207) 465-9601
www.wallingfords.com
GB harvester and slasher saw bars

TMS machinery sales

...featuring the best equipment, products & services for the sawmill, logging, pallet, shavings and woodworking industries.



TMS Machinery Sales advertisers offer a variety of new equipment, supplies and services. Receive tremendous exposure, immediate response, new leads and additional sales.

Call **Sheena Daniels** for display advertising of new equipment, products or services at **800-766-6705**.

Used equipment sellers can advertise equipment **FREE OF CHARGE** on-line and in print.

Call **Rebecca Hall** for used equipment listings or inquiries at **800-766-6701**, fax **256-761-2579**.

Call **Sheena Daniels** for your **FREE** subscription at **800-766-6701** or **256-480-5084**.



Scan Quick Response code with your smart phone to visit tms-sales.com.

www.tms-sales.com



THE PAUL BUNYAN SHOW LUMBERJACK COMPETITION

THE HOME OF WORLD-

LUMBERJACK ACTION



It's hard to beat the excitement of a live lumberjack competition. Your senses are assaulted by the roar of the chainsaws, the smell of sawdust, and the ground shaking as timber falls. That's why the lumberjack competition is always the biggest draw at The Paul Bunyan Show.

This year's show brings together 20 of the sport's top competitors, including 2016 U.S. Champion Matt Cogar. Every year, The Paul Bunyan Show gets to award the U.S. title in one STIHL Timbersports event, and this year the entrants will be vying for the U.S. single bucking championship.

YOUR SENSES ARE ASSAULTED BY THE ROAR OF THE CHAINSAWS, THE SMELL OF SAWDUST, AND THE GROUND SHAKING AS TIMBER FALLS.

This isn't a sport of specialists, noted Mike Sullivan, director of the international lumberjack competition at The Paul Bunyan Show and a professional lumberjack who has won dozens of world titles in various events. Most competitors are good in all the events, because winning the overall title is everyone's goal. So, the single bucking title could go to any of the competitors.

Lumberjacks competed among themselves to see who was fastest or best long before it became an organized sport. In Australia and New Zealand, wood-chopping has been a competitive sport for over a century, Sullivan said. In fact, early in his career he spent winters Down Under to hone his skills.

But the current iteration of what we refer to as "lumberjack sports" originated in the United States, and in 1985 STIHL introduced its Timbersports Competition Series. The series crowns both a U.S. Champion and a World Champion annually. (Sullivan was the first to win the series title back in 1985.) The Paul Bunyan Show's lumberjack competition incorporates most of the disciplines from STIHL Timbersports. Events include:

- **Single Bucking.** The competitor uses a single-man, cross-cut saw to make one cut through a 19-inch diameter white pine log, slicing a puck of wood off the trunk.
- **Standing Block Chop.** As if felling a tree, the competitor chops through a block of wood—a 12- to 14-inch-diameter white pine log standing upright like a tree.
- **Underhand Chop.** This skill is similar to chopping a felled tree into logs. The competitor stands on a horizontal log that's 12 to 14 inches in diameter. With feet apart, he chops the log from both sides with a racing axe.
- **Springboard Chop.** The lumberjack uses an axe to chop pockets into a vertical pole. He'll insert a springboard in one pocket, stand on it to chop his next pocket, then stand on the second springboard to cut through the top of the 9-foot pole. The discipline reflects the actions loggers take to create a platform above the huge roots of an old-growth tree so they can cut the tree.
- **Hot Saw.** A hot saw is a customized chainsaw that uses a modified motor with 60 to 80 horsepower, usually designed for a personal watercraft or snowmobile. The athletes often build their own hot saws, which get the name because they don't have a cooling system. It takes real strength to control these heavy, powerful saws.

CLASS



The Paul Bunyan Show also has competitions in two-man cross saw, axe throwing, and Jack-and-Jill cross saw. Women, or “Jills”, are getting more involved in the sport, and this year The Paul Bunyan Show will add a women’s underhand chop event and a Jill-and-Jill cross-cutting event.

The hot saw and springboard competitions are the most popular with spectators, Sullivan said.

EVERY YEAR, THE PAUL BUNYAN SHOW GETS TO AWARD THE U.S. TITLE IN ONE STIHL TIMBERSPORTS EVENT.

Because there is so much going on at the fairgrounds during The Paul Bunyan Show, Sullivan knows a lot of spectators won’t sit through the entire competition on Saturday afternoon. He keeps the events moving at a brisk pace, and mixes things up so that even if you only attend for an hour you’ll see a couple of heats from different events. The heats are always head-to-head, not a field of eight, so it’s easy for spectators to follow and tell who won.

“At The Paul Bunyan Show, you are seeing the best competitors. These guys are world-class,” Sullivan said. In addition to the top American competitors, the show has hosted contestants from Europe, Canada, Australia, and New Zealand, he added.

Some of the competitors to watch this year at the Guernsey County Fairgrounds include:

Matt Cogar, the first American to win four straight U.S. championship titles in the STIHL series.

Arden Cogar, who came in second in the 2016 U.S. championship, right behind his cousin Matt.

Nathan Waterfield, a professional arborist who excels in the springboard competition.

Jason Lentz, a fourth-generation lumberjack who says the underhand chop is his favorite event.



YOU ARE SEEING THE BEST COMPETITORS. THESE GUYS ARE WORLD-CLASS.

Mel Lentz, Jason’s dad, who is still competing as he nears 60. Mel has been doing the STIHL Series since it started, and holds six U.S. Series titles.

Stirling Hart, a Canadian champion who started competing against adults when he was only eight.

J.P. Mercier, a two-time Canadian champion who started competing in the STIHL Series back in 1998.

The action in the stadium provides a magnificent spectacle, and allows observers to get up close to the action, Sullivan noted. This is a family-friendly sport, and fans are encouraged to come backstage to talk to competitors, or ask for autographs.

2017 OUTDOOR SHOW MAP



PAUL BUNYAN SHOWSM

SUBJECT TO CHANGE WITHOUT NOTICE

THE OFFICIAL



PAUL BUNYAN SHOWSM

GENERAL SHOW LAYOUT
GUERNSEY COUNTY FAIRGROUNDS
CAMBRIDGE, OHIO



2017 INDOOR MAP

Exhibit Hall #1 – Grandstands - Industry Exhibits																				
G 1	G 2	G 3	G 4	G 5	G 6	G 7	G 8	G 9	G 10	G 11	G 12	G 13	G 14	G 15	G 16	G 17	G 18	G 19	G 20	G 21
																			Door →	
door	G 36	G 35	G 34	door			G 33	G 32	G 31	G 30	door	G 29	G 28	door	G 27	G 26	G 25	G 24	G 23	G 22

Stage	Education Hall	E4
		Door
E3		E5
E2		E6
E1		E7
Kitchen		E8
		Door

Exhibit Hall #2 - Industry Exhibits													
H 18	H 19	H 20	H 21	H 22	H 23	H 24	H 25	H 26	H 27				
<table border="1" style="margin: auto;"> <tr> <td>H 16</td><td>H 15</td> </tr> <tr> <td>H 7</td><td>H 8</td> </tr> </table>										H 16	H 15	H 7	H 8
H 16	H 15												
H 7	H 8												
door →													
← door													
H 4	H 3	H 2	H 1	Paul Bunyan Show Merchandise Sales									
OFA Office Paul Bunyan Show Headquarters													

Exhibit Hall #3 – WoodWorks Barn Woodcrafts, Carvers								
C 1	C 2	C 3	C 4	C 5	C 6	C 7	C 8	
door								door
C 16	C 15	C 14	C 13	C 12	C 11	C 10	C 9	
C 17	C 18	C 19	C 20	C 21	C 22	C 23	C 24	
door								door
C 32	C 31	C 30	C 29	C 28	C 27	C 26	C 25	

Subject to change without notice. Not drawn to scale

FLAPJACKS FOR LUMBERJACKS

JOIN US FOR FLAPJACKS AND OHIO-MADE MAPLE SYRUP! FUNDRAISING BREAKFAST
to Benefit The Ohio Tree Farm Committee!
LOCATED IN THE EDUCATION HALL

South end of fairgrounds, near Great Lakes Timber Show.

**SAT. & SUN
7- 10 AM**



WE KNOW LAND CLEARING



Clearing the way ... for the future, today!

Our experience and specialized equipment is what keeps us on top.

- Acreage Clearing • Logjam Removal • Pipeline Clearing
- Forestry Mowing • Buyers of Standing Timber



(440) 632-0551

WWW.HHLANDCLEARING.COM

MIKE@HHLANDCLEARING.COM



RULE THE OUTDOORS

HUGE FACTORY DISCOUNTS
at Makita Booth
#504

MAGNESIUM™

EA7900PRZ
79 cc Chain Saw

The MAKITA TEAM COLOR is the trade dress of Makita Corporation and is protected under trademark law and registered with the U.S. Patent and Trademark Office. POP 06/17 MA-7598-12

Learn More at makitapowerequipment.com

Makita®



2017 PAUL BUNYAN SHOW FOOD VENDOR LISTING

MENU	LOCATION	COMPANY
Sweet Corn, Italian Sausage	F13	Aunt Pat's Casa
French Fries, Corn Dogs, Hot Chocolate, Coffee	F10 & F15	Bailey Concessions
Flapjacks and sausage	Education Hall	Ohio Tree Farm Committee
Homestyle Chicken & Noodles, Hot Dogs, Coffee, Pepsi Products, Fudge Puppies	F11	BapGap Food Concessions
Pulled Pork, Beef Brisket	F4	Buckeye BBQ
French Fries	F5	More-Like Home Food Service
Walking Taco, Texas Tenderloin, Nachos, Burritos, Taco Salad	F6	More-Like Home Food Service
Pretzels, Cinnamon Rolls, Coffee	F7	More-Like Home Food Service
Gyros, Chicken Pita, Chicken Nuggets	F8	More-Like Home Food Service
Kettle Korn	F9	More-Like Home Food Service
Smoked Brats, Fried Bologna, Marinated Chicken Breast, Hot Kielbasa, Bacon Patties, Bologna Kabobs, BUNYAN BURGERS	F2, and in the infield	Phillips Catering
Breakfast Sandwiches, Chicken Sandwiches, Turkey Legs, Philly Sandwich, Jumbo Hot Dogs, Chips, Cole Slaw	F3	Dockside Restaurant
Ice Cream, Root Beer Floats, Milkshakes	F13	Rader's Old Fashion Ice Cream
Chicken Sandwich, Pork or Brisket Potato, Pork Nachos, Beans, Slaw, Ribs	F14	

VISIT THE OFA HEADQUARTERS IN EXHIBIT HALL 2

OFFICIAL PAUL BUNYAN SHOW T-SHIRTS & SOUVENIRS



**GET YOUR
OFFICIAL
PAUL BUNYAN
SHIRTS NOW!**

COME WATCH THIS EXCITING DEMONSTRATION!

THE **2017** GREAT PORTABLE SAWMILL **SHOOT-OUT**™

Independent Sawmill & Woodlot Management magazine is pleased to partner with the Paul Bunyan Show to bring this event to Ohio. Everyone interested in portable sawmilling will want to watch this thrilling side-by-side demonstration where manufacturers gather to show the capabilities of their machines.

Event Proudly Sponsored By

TAJFUN®



Come watch in the
Shoot-Out Arena!



ATTEND THE 2017 SEMINARS:

2017 EVENT PARTICIPANTS

list subject to change

Baker Products
(1 mill)

EZ Boardwalk (1 mill)

Lucas Portable Sawmills (2 models)

Norwood Industries
(2 models)

Peterson Portable Sawmills (2 models)

Timbery Portable Sawmills (1 mill)

Turbo Sawmill
(1 mill)

Wood-Mizer
(3 models)

STOP BY OUR BOOTH FOR A
FREE MAGAZINE

Friday, Oct. 6

9:30-11:00 AM
Basics of Hardwood Lumber Grading This seminar will introduce participants to the standard grading rules of the National Hardwood Lumber Association and demonstrate how they are applied. Participants are expected to apply of the grading rules they are learning. Bring a calculator and something to write with. This course provides a good foundation for both the sawing for grade and edging courses.

12:30-2:00 PM
Sawing for Grade and Patterns in Hardwoods—Part 1 This is the first part of a 2-part session. Various sawing patterns are used to maximize the value of material produced from a log. In this session, different sawing methods will be discussed, including grade sawing and quartersawing.

3:00-4:30 PM
Sawing for Grade and Patterns in Hardwoods—Part 2 Part 2 will focus on sawing exercises that demonstrate the topics presented and allow the participants to apply their newly learned knowledge.

Our Seminar Presenter is **Brian H. Bond**, a Professor & Extension Specialist in the Dept of Sustainable Biomaterials at Virginia Tech.

Saturday, Oct. 7

9:30-11:00 AM
Guidelines for Edging Hardwood Lumber Hardwood lumber is typically sold random width, with both edges being sawn square. This presentation will discuss how to determine the proper width for edging lumber to achieve the widest lumber and highest grade based on the National Hardwood Lumber grading rules. Practical guidelines on how to apply the concepts in a production situation.

12:30-2:00 PM
Drying Options for the Small Operator The price of properly kiln-dried lumber is often double the price of green, and being able to supply dry lumber increases the number of markets that one can sell to. We'll cover the basic information that a small operator should know and consider regarding the drying of hardwood and softwood lumber, including drying methods and equipment, how wood dries, and associated defects.

3:00-4:30 PM
Understanding Wood & Water for Woodworkers Wood is a wonderful raw material to work with, but it does have some unique features that can lead to problems while processing and in use. This seminar discusses one of the main issues related to the use of wood—moisture content and its changes.



Register for seminars today at the Paul Bunyan Show Office



The Paul Bunyan Show - October 6-8, 2017
Guernsey County Fairgrounds – Cambridge, (Old Washington) OH
2017 Sawmill & Woodlot Seminar Pre-Registration Form



Please answer the following questions:
(Required for trade buyer badge)

1. Business Type (check all that apply)

- Arborist
- Biomass
- Firewood Processor
- Forestry/Education
- Forestry/Government
- Logger
- Pallets
- Portable Sawyer
- Press
- Sawmill Operator
- Timber Transporter
- Woodlot Owner/Manager
- Woodworker
- Other _____

2. What is your title?

- Self-employed
- Owner/CEO/President
- Vice President/COO
- Purchasing Manager
- Manager/Foreman/Supervisor
- Other _____

3. What is your role in purchasing?

- Final Say Recommend
- Other

4. Do you intend to purchase forestry equipment in the next year?

- Yes No

Company: _____

Name: _____

Address: _____

City: _____ State: _____ Zip _____

Phone: _____ Fax: _____

Email: _____

Completion of this form serves OFA, Paul Bunyan Show Management and Independent Sawmill and Woodlot Magazine notice that you agree to be contacted by any of the means above and that your photo may be used in future advertising material including print advertising and web advertising.

Please complete the following sections:

Section 1: General admission (includes everything except Sawmill & Woodlot seminars) (choose one)

- Trade Buyer Badge – Free
- Adult admission \$8.00 per day x _____ (number of tickets)
- Student or senior admission \$4.00 per day x _____ (number of tickets)

Sub Total Section 1 _____

Section 2: Sawmill & Woodlot Seminar Registration (choose one)

	By October 2, 2017	After October 2, 2017
1-2 Seminars	<input type="checkbox"/> \$35.00 each	<input type="checkbox"/> \$45.00 each
3-5 Seminars	<input type="checkbox"/> \$30.00 each	<input type="checkbox"/> \$35.00 each
6 Seminars	<input type="checkbox"/> \$25.00 each	<input type="checkbox"/> \$30.00 each

Sub Total Section 2 _____

Section 3: Which Sawmill & Woodlot Seminars will you attend? For a full course description visit www.OhioForest.org.

Friday, October 6, 2017

- Basics of Hardwood Lumber Grading - Brian H. Bond/Associate Professor, Virginia Tech 9:30 am - 11:00 am
- Sawing for Grade and Patterns in Hardwoods, Part 1 - Brian H. Bond/Associate Professor, Virginia Tech 12:30 pm - 2:00 pm
- Sawing for Grade and Patterns in Hardwoods, Part 2 - Brian H. Bond/Associate Professor, Virginia Tech 3:00 pm - 4:30 pm

Saturday, October 7, 2017

- Guidelines for Edging Hardwood Lumber - Brian H. Bond/Associate Professor, Virginia Tech 9:30 am - 11:00 am
- Drying Options for the Small Operator - Brian H. Bond/Associate Professor, Virginia Tech 12:30 pm - 2:00 pm
- Understanding Wood and Water for Woodworkers - Brian H. Bond/Associate Professor, Virginia Tech 3:00 pm - 4:30 pm

Cancellation Policy: Show Admission tickets are non-refundable. Refunds for cancellation of seminar tickets will be made only upon request. Cancellations made prior to September 18, 2017 will receive a refund of 50% of seminar fees. No refunds will be made after September 18. Please make checks payable and mail form with payment to: Ohio Forestry Association • 1100-H Brandywine Blvd • Zanesville, OH 43701 or fax to 740-452-2552

For more information call OFA at 888-38-TREES (888-388-7337), or email Info@OhioForest.org or visit www.OhioForest.org.

Return completed form with your check, cashier's check or money order to:

Ohio Forestry Association • 1100-H Brandywine Blvd • Zanesville, OH 43701-7303 • Phone: 888-388-7337 • Fax: 740-452-2552
 For security reasons OFA is unable to accept credit cards by phone, fax, email or mail. If you wish to pay with a credit card, please register online at www.OhioForest.org. Click on Events, then Paul Bunyan Show. OFA accepts American Express, Visa, MasterCard and Discover.

All payments in U.S. funds drawn on U.S. banks. \$25 fee charged for all returned checks.

For Office Use Only: Rcvd _____ Ck # _____ Amt \$ _____ Ackd _____ Booth # _____



2017 PAUL BUNYAN SHOW PRODUCT LISTING



CHAINSAW CARVERS

Bailey's, Inc.	114
Buckeye Woodturners (BWWT)	C1, C2, C3, C4, C5, C6, C7
Carving-Dreams	WC1
Cedar, Oak, KOA & Associates, LLC	C9, C10
Central Ohio Wood Turners	C13, C14
David Crego Chainsaw Art	WC5
General Power Equipment	507, 508, 509
Popular Poplar Toys	C27, C28
Possum Products, LLC	C22
Steve's Wood Crafts & Signs	WC6
STIHL Pro Carving Team	502
Sugar Ridge Carving	WC3, WC4

CHAINSAWS/OUTDOOR POWER EQUIPMENT

American CLS, Inc.	449
Amsoil	H21
Bailey's, Inc.	114
Brownwood Sales	309, 450
Engine House Power Equipment	131
General Power Equipment	507, 508, 509
George Kahler Sales LLC	306
Hotsy Equipment Company	123
Husqvarna	510, 511, 512, 513
Laona Machine Supply	454
Linndale Equipment	446, 447
Makita USA	504
Payeur International Inc.	415
Save Edge, Inc.	104

CHIPPERS/GRINDERS

Aggcorp	GR2
Bailey's, Inc.	114
Baker & Sons Equipment Co.	463, 464, 470
Bandit Industries, Inc.	402, 408, 409, CH2, GR2
Columbus Equipment Company	400, 401, 406, 407, CH3, GR1
Davey Tree Expert Company	506
Fecon, Inc.	441
General Power Equipment	507, 508, 509
The Knifesource LLC	G22, G23
McCormick & Sons, Inc.	G13, G14, G15
Menominee Saw & Supply	G1
Millner-Haufen Tool Co.	H7
New River Equipment Corp.	411
Northeast Implement	421
Payeur International Inc.	415
Peterson Pacific	403, 410, CH1, GR3
Precision Husky Corp.	G9
Rayco Mfg., Inc.	418, 419, 425, 426
Rotochopper, Inc.	GR5
Seppi M. USA	129

EDUCATION/NON-PROFIT/ GOVERNMENT AGENCIES

ODNR - Division of Forestry	E8
Ohio EPA	E4
Ohio Tree Farm Committee	E5
Sawmill & Woodlot Magazine	H22, H23
Trinity Baptist Church	C24
USDA APHIS, PPQ	C15

FIREWOOD PRODUCTION

American CLS, Inc.	449
Bailey's, Inc.	114
Bell's Machining, Welding & Hydraulics	451, 456
Blockbuster, Inc.	477, 478
Brownwood Sales	309, 450
CORD KING	471, 474
Dyna Products	452, 453, 457, 458
Engine House Power Equipment	131
Husqvarna	510, 511, 512, 513
Iron Bull Mfg. LLC	G17
Kiln-direct	473
Linndale Equipment	446, 447
Metsa Machines	413
Multitek North America, LLC	443, 448
Northeast Implement	421
OESCO, Inc.	476
Payeur International Inc.	415
Timberwolf Manufacturing Corp.	308

LOGGING EQUIPMENT/SUPPLIES

Amsoil	H21
Bailey's, Inc.	114
Baker & Sons Equipment Co.	463, 464, 470
Bell's Machining, Welding & Hydraulics	451, 456
Brownwood Sales	309, 450
Columbus Equipment Company	400, 401, 406, 407, CH3, GR1
Engine House Power Equipment	131
EZ Boardwalk	472
Fecon, Inc.	441
General Power Equipment	507, 508, 509
George Kahler Sales LLC	306
Grinder Wear Parts & Apollo Equipment	G10
Hotsy Equipment Company	123
Husqvarna	510, 511, 512, 513
KASCO WoodMaxx Blades	G12
The Knifesource LLC	G22, G23
Laona Machine Supply	454
Left Coast Supplies	442
Logrite Tools	431
Menominee Saw & Supply	G1
Metsa Machines	413
Millner-Haufen Tool Co.	H7
Multitek North America, LLC	443, 448

Murphy Tractor & Equipment Co.	439, 440, 444
Newlon's International Sales, LLC	514
Northeast Implement	421
Ohio Cat	455
PalFleet Truck Equipment	414
Payeur International Inc.	415
Peterson Pacific	403, 410, CH1, GR3
Ponsse North America, Inc.	432, 433
PowerPure LLC	G20
Precision Husky Corp.	G9
Ricer Equipment	459, 460, 465, 466
Rudd Equipment Co.	461
Ryan's Equipment	417
Turbo Sawmill/Spectrum Innovations Ltd.	505
Wood Beaver Forestry	467, 468
Woodcracker	126

SAFETY EQUIPMENT/APPAREL

AQUASOLES by TriStar Medical Products LLC	B27
Arborwear LLC	121, 122
Bailey's, Inc.	114
Davey Tree Expert Company	506
Fenix Tactical Flashlights	H4
General Power Equipment	507, 508, 509
George Kahler Sales LLC	306
Husqvarna	510, 511, 512, 513
Laona Machine Supply	454
Logger Wade	128
Quality Craft Tools	445
Tracked Lifts Inc.	134

SAWMILL EQUIPMENT/SUPPLIES

Amsoil	H21
Bailey's, Inc.	114
Baker Products	416, 423
Bandit Industries, Inc.	402, 408, 409, CH2, GR2
Bell's Machining, Welding & Hydraulics	451, 456
Brownwood Sales	309, 450
Diamond Saw Works	G26
Engine House Power Equipment	131
Enovative Technologies	C12
General Power Equipment	507, 508, 509
HMC Corp.	G24
Hotsy Equipment Company	123
Husqvarna	510, 511, 512, 513
Innovative Functions, Inc.	G28, G29
Iron Bull Mfg. LLC	G17
KASCO WoodMaxx Blades	G12
Kiln-direct	473
The Knifesource LLC	G22, G23
Left Coast Supplies	442
LITS	G8
Logrite Tools	431
McCormick & Sons, Inc.	G13, G14, G15

Menominee Saw & Supply	G1
Millner-Haufen Tool Co.	H7
Murphy Tractor & Equipment Co.	439, 440, 444
Newlon's International Sales, LLC	514
Norwood Sawmills	429
Ohio Cat	455
Payeur International Inc.	415
Precision Husky Corp.	G9
Premier Bandwheel & Equipment Ltd.	H8
Ricer Equipment	459, 460, 465, 466
Rudd Equipment Co.	461
Ryan's Equipment	417
Timbery LLC	462
Turbo Sawmill/Spectrum Innovations Ltd.	505
Wood-Mizer Products, Inc.	436, 437, 438, G21

TREES/SEEDLINGS

Arborgen, Inc., Supertree Seedlings	H25
Davey Tree Expert Company	506

TRUCKING/TRAILERS/TRANSPORTATION

Baker & Sons Equipment Co.	463, 464, 470
Battle Wagon Trailers	412
Brownwood Sales	309, 450
Hill International Trucks	434, 435
Hotsy Equipment Company	123
Innovative Trailers	424
Kaufman Trailers	503
Newlon's International Sales, LLC	514
Northeast Implement	421
PalFleet Truck Equipment	414
Payeur International Inc.	415

WOOD CRAFTS/CHAINSAW CARVERS

Bailey's, Inc.	114
Buckeye Woodturners (BWWT)	C1, C2, C3, C4, C5, C6, C7
Carving-Dreams	WC1
Cedar, Oak, KOA & Associates, LLC	C9, C10
Central Ohio Wood Turners	C13, C14
David Crego Chainsaw Art	WC5
General Power Equipment	507, 508, 509
Popular Poplar Toys	C27, C28
Possum Products, LLC	C22
Steve's Wood Crafts & Signs	WC6
STIHL Pro Carving Team	502
Sugar Ridge Carving	WC3, WC4

WOOD STOVES

American CLS, Inc.	449
Hardy Heaters	130
HeatMasterSS/Steel Tech Inc.	141
Ultimate Outdoor Furnace LLC	127

FROM SMALL SAWMILLS TO LARGE MANUFACTURERS...

WE WORK HARD FOR YOU!

LUMBERMEN'S Equipment Digest

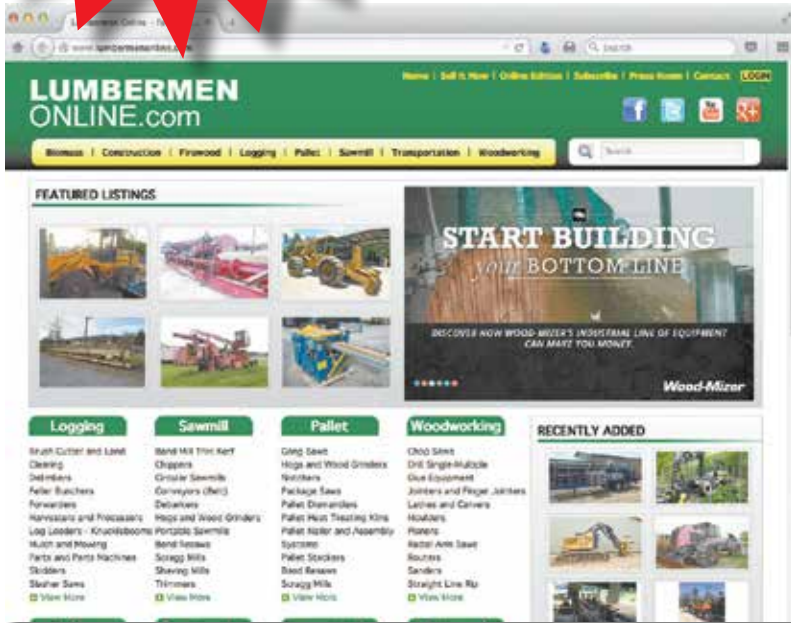
Bringing Buyer & Seller Together!

Manufacturers

DEALERS

services

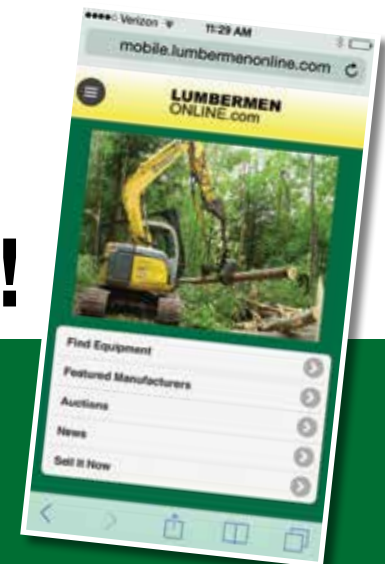
SUPPLIERS



LUMBERMEN ONLINE.com

Your Connection to
Lumbermen Worldwide!

MOBILE SITE!



Let us do for your business what we do
every month for hundreds of other lumbermen
– Find them customers!

VISIT OUR BOOTH OR CALL 1-800-477-7606

GRIND & COLOR SOLUTIONS



The **ONLY** Patented Grind & Color System

Rotochopper is driven by customer focused innovation and continuous improvement, incorporating the latest technological advancements into our machines. The patented grind and color system remains the **ONLY** "Perfect in One Pass"[®] solution. It was the first and the best. Now it's better.

Introducing Rotochopper's 2nd generation patented grind and color system with superior one pass coverage and technical user-friendly improvements. Now the best is even better.

Contact us today or visit us at the show to learn how Rotochopper's 2nd generation grind and color technology can maximize the margins of your mulch operation.

320-548-3586 www.rotochopper.com  Made



"Perfect In One Pass"[®]

We Buy White Oak Logs!



Contact Brodie Buckley
740.328.9344

**Independent Stave Company
welcomes all white oak suppliers!**

- ✓ Top prices for your logs
- ✓ Experienced log buyers
- ✓ Professional service

www.independentstavecompany.com



**INDEPENDENT
STAVE COMPANY**

Log Procurement & Sales



**TAKE A SWING AT
DOWNTIME.**

In the forest, uptime isn't everything. It's the only thing. And with our customer-inspired 3154C, 3156G, 3754C, and 3756G Swing Machines, you'll have the power to knock out some serious work. Optional forestry-excavator cab with side entry provides 25-percent more space than previous models. Efficient climate control, heated/cooled seats, ergonomic fingertip controls, and superb visibility help beat fatigue. And fully integrated Waratah processing heads come factory installed, providing off-the-line reliability and productivity.

Learn more about our heavy-hitting G-Series Swing Machines — call us today.

MURPHY
TRACTOR & EQUIPMENT CO.

855-246-9124

murphytractor.com



YOUR WOOD-MIZER TWIN RAIL SAWMILL *choice*

NEW!
LX450 Twin Rail



MULTIPLE CHOICES, *one* SAWMILL COMPANY

Introducing the Wood-Mizer LX450 TWIN RAIL portable sawmill. With many of the proven, robust features of Wood-Mizer's LT40 and LT50 sawmill models, the LX450 is designed to accommodate those who simply prefer a twin rail design. You now have more **CHOICES** than ever from the world's leading portable sawmill manufacturer. Stationary or portable, manual or hydraulic, standard head or wide, monorail or twin rail.

- Rigid LX Frame sawhead tower
- 38 HP EFI gas engine
- Saws wide and deep – 34" width and 16 1/2" depth of cut
- Operator control with SimpleSet Setworks on an adjustable arm
- Hydraulic bi-directional chain log turner, log loader, toeboards, and clamp
- **EVERY INCH A WOOD-MIZER**



The choice is here, the choice is yours, and it's only available from Wood-Mizer.

COME SEE US AT PAUL BUNYAN!

LIVE *the wood life*

800.553.0182 | woodmizer.com



Wood-Mizer

© 2017 Wood-Mizer LLC *Free shipping is available only in the contiguous US. Full box quantities only.



THANKS TO OUR EQUIPMENT DONORS

**BAKER & SONS
COLUMBUS EQUIPMENT
COMPANY**



**DOLL LUMBER
MURPHY TRACTOR
OHIO CAT**



**RICER EQUIPMENT
RUDD EQUIPMENT
SUPERIOR HARDWOODS**



Meet Ohio Master Loggers and help support the
**OHIO FORESTRY WILDLIFE
& CONSERVATION CAMP**
by guessing board footage at the
OHIO FORESTRY ASSOCIATION BOOTH!

The Ohio Forestry Association (OFA) will be photographing and/or videotaping this event. Your image may appear in OFA printed and/or electronic publications for promotional and educational purposes, and may be made available to the media and other third parties, or published on the internet. If you have any concerns about your likeness being reproduced, please notify OFA at 888-388-7337. Entrance, in the absence of said notification, is considered consent or acceptance of these terms. Thank you for your understanding, and please enjoy The 2017 Paul Bunyan Show.

DURA-BASE[®] ADVANCED-COMPOSITE MAT SYSTEM™

Each individual mat
measures 8' x 14' x 4" thick
(2.44m x 4.27m x 10.2cm) and
weighs approximately 1,000 lbs (454kg).

- **DURA-BASE Advanced Composite Mat System** gives you a solid road to your jobsite
- Interlocking design for a continuous work surface
- Reduce TRIR • Fully recyclable
- Zero environmental remediation
- Minimize or eliminate aggregate required to build work site
- 10-15 year lifespan
- Reduced logistical costs (46 DURA-BASE mats per load vs 20 wood mats per load)



1-877-MAT-ROAD (1-877-628-7623) • www.newpark.com



THANKS TO OUR SHOW SPONSORS



Husqvarna



JOHN DEERE

GLATFELTER
Beyond Paper

NORTHWEST
HARDWOODS



SUPERIOR HARDWOODS
OF OHIO



Yoder Lumber
Quality is Our Tradition



PREMIER BANDWHEEL & EQUIPMENT LTD.

SHAWN M. PARSONS
President

Unit#306 7728 128th Street
Surrey BC, Canada
V3W 1L3

o. 604.591.2080
c. 604.619.8205
f. 604.591.2835

e. sales@premierbandwheel.com



Aggressive • Clean Cutting
Sharp Out of the Box



MAXIMIZE YOUR MILL

WITH



Precision Ground Teeth • Induction Hardened
Tight Tolerance Balanced Set • High Carbon US Steel

877.366.1696 • www.WoodMaxxB Blades.com

The timber industry's big blue ox.



It's no tall tale, with 13 service branches delivering across nine states, Rudd's freight system is strong like an ox. Along with our award-winning master technicians, we can deliver equipment, replacement parts and service to your site by the next morning. It's that kind of 24/7 service that proves how committed Rudd is to going the distance for you. Call the industry giants for your heavy equipment needs or visit us at ruddequipment.com.

RUDD

We go the distance.

Cleveland, OH 216-393-7833 • Columbus, OH 614-636-4050 • Cincinnati, OH 513-321-7833

WHEN YOU WANT RELIABILITY, WE'RE READY.

If a chainsaw is the tool of your trade, quality and reliability are key. Husqvarna chainsaws feature state-of-the-art ergonomics, rugged construction and innovative features that work as hard as you do. Back that up with our nation-wide sales and service centers, and you definitely have the brand you can rely on. To learn more visit husqvarna.com

562 XP®
— STARTING AT —
\$739.95
MSRP



POWERFUL ENGINES

The X-Torq® engine powers through tough cuts with lower fuel consumption and reduced exhaust emission levels.

SLIM DESIGN

Makes the chainsaw easy and convenient to handle in any situation.

RAPID ACCELERATION

RevBoost™ delivers higher chain speeds for best limbing performance.

MAGNESIUM CRANKCASE

Withstands high RPMs and tough professional use, ensuring a long service life.

HUSQVARNA DEALERS AND SERVICE CENTERS ARE LOCATED THROUGHOUT THE UNITED STATES AND CANADA

Features shown not available on all models.